



SOUTH AMERICA  
VENEZUELA  
**ISLA LA TORTUGA**

SOUNDINGS IN METERS  
(under 20 in meters and decimeters)  
(meters and half meters to 30)  
HEIGHTS IN METERS ABOVE MEAN SEA LEVEL  
Contour interval 10 meters

**SOUNDINGS IN METERS**

(REGION 2)  
CATALOG: P2402

MERCATOR PROJECTION  
WORLD GEODETIC SYSTEM - 1972 DATUM  
For Symbols and Abbreviations, see Chart No. 1

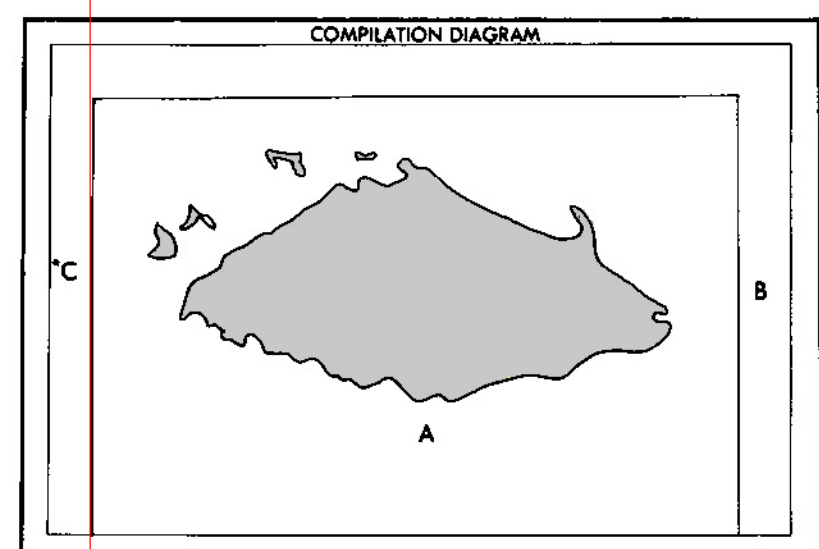
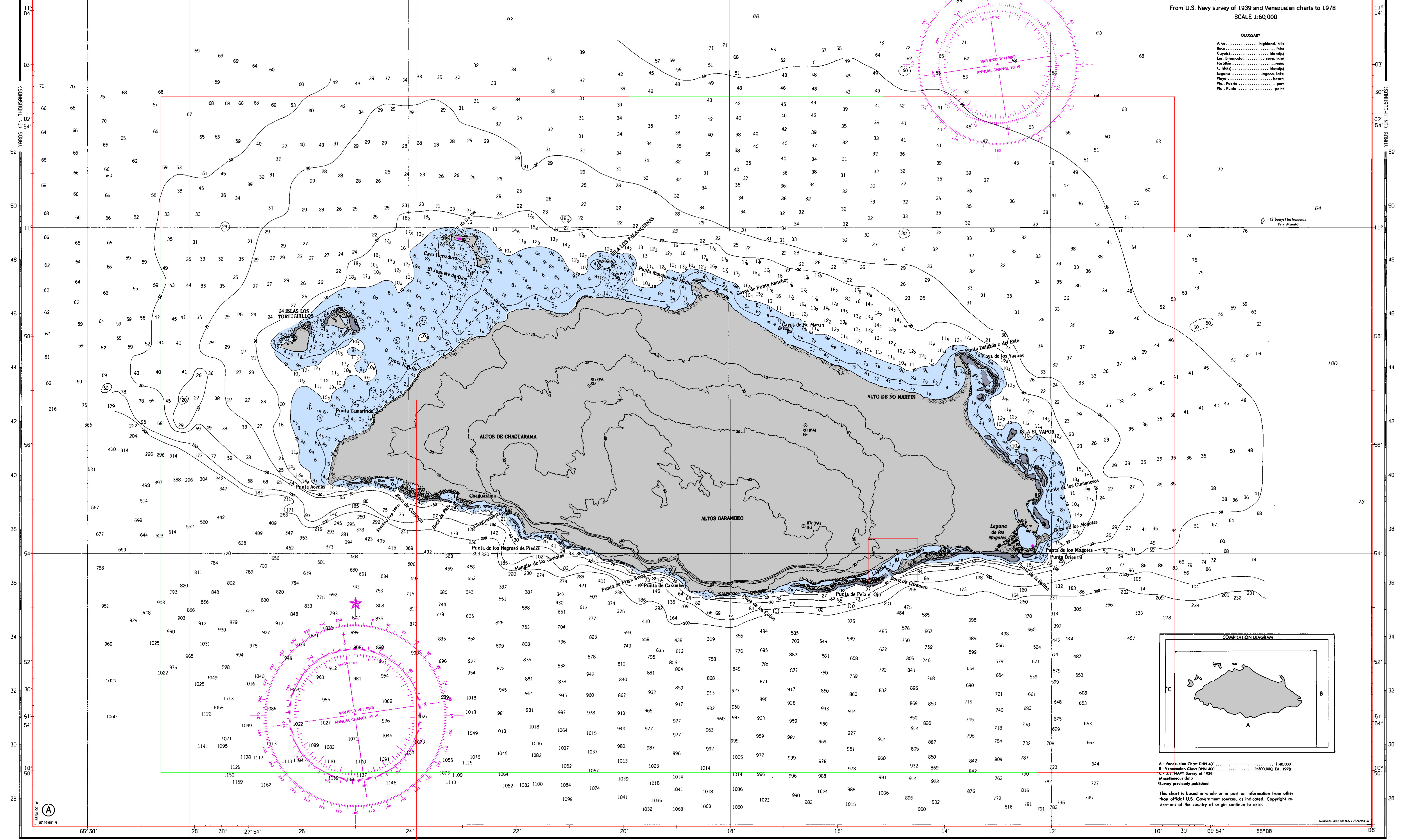
VENEZUELA  
**ISLA LA TORTUGA**  
From U.S. Navy survey of 1939 and Venezuelan charts to 1978  
SCALE 1:60,000

**GLOSSARY**

- Alto ..... highland, hills
- Boca ..... inlet
- Cayal ..... island(s)
- Ena, Ensenada ..... bay, inlet
- Faroalón ..... rocks
- Isla(s) ..... island(s)
- Laguna ..... lagoon, lake
- Playa ..... beach
- Pta., Punta ..... point
- Pto., Puerto ..... port
- Pto., Punta ..... point

24441

24441



A - Venezuelan Chart DHN 401 ..... 1:40,000  
B - Venezuelan Chart DHN 400 ..... 1:300,000, Ed. 1978  
C - U.S. NAVY Survey of 1939  
Miscellaneous data  
\*Survey previously published

This chart is based in whole or in part on information from other than official U.S. Government sources, as indicated. Copyright restrictions of the country of origin continue to exist.